

FIXED ORIFICE BALL FLOAT STEAM TRAP(FOFT-20/VFT-21)

TECHNICAL INFORMATION SHEET

CAST IRON

SIZE : 15 TO 25 NB



DESCRIPTION

Volfram Fixed orifice Ball Float Steam Traps(FOFT-20) are available with air vent and steam lock release. These traps are designed for draining condensate from all types of low & medium pressure steam heating process.

SIZES & CLASS / RATINGS

- Available Sizes : 15NB, 20NB and 25NB
- End Connection : Screwed

Types : FOFT-20 - 4.5, 10, 14 bar Differential Pressure & Option with SLR / Thermostatic Air Vent

FEATURES

- Discharges condensate from trap at saturated temperature
- Excellent air venting(by thermostatic air vent)



FIXED ORIFICE BALL FLOAT STEAM TRAP(FOFT-20)

CAPACITY CHART(kg/hr)

Model		FOFT20-4.5		FOFT20-10		FOFT20-14	
Size		15/20 NB	25 NB	15/20 NB	25 NB	15/20 NB	25 NB
Differential Pressure(bar)	0.5	188	557	127	242	118	137
	1	263	735	141	336	132	168
	1.5	301	788	155	389	141	189
	2	329	923	169	441	155	231
	3	376	1070	197	536	179	273
	4	427	1154	227	599	208	315
	4.5	465	1290	240	630	216	336
	5	-	-	271	672	231	347
	6	-	-	282	714	255	378
	7	-	-	330	746	278	399
	8	-	-	368	798	306	420
	9	-	-	381	840	329	452
	10	-	-	395	861	353	473
	11	-	-	-	-	380	483
	12	-	-	-	-	404	499
13	-	-	-	-	427	515	
14	-	-	-	-	453	536	

* NOTE : WE RESERVE THE RIGHT TO CHANGE SPECIFICATIONS WITHOUT PRIOR NOTICE FOR THE DEVELOPMENT AND IMPROVEMENT OF THE PRODUCT.

PAGE.: 01 OF 02



VOLFRAM SYSTEMS INDIA PVT. LTD.

OFFICE ADDRESS : 402, RUTUVIHAR, VARANASI SOCIETY, WARJE, PUNE, 411058
 FACTORY ADDRESS : D II, BLOCK NO. 58&59- 13/14/15, OPP. SPACO CO., SANT
 DYANESHWAR INDUSTRIAL ESTATE, MOHAN NAGAR, MIDC CHINCHWAD, 411019
 Tel.: +91 9309534688 | Email: steam@volfram.in | www.volfram.in

V5 OCT 2023

FIXED ORIFICE BALL FLOAT STEAM TRAP(FOFT-20/VFT-21)

TECHNICAL INFORMATION SHEET

CAST IRON

SIZE : 15 TO 25 NB



OPERATING CONDITIONS

Max. Operating Pressure	Max. Operating Temperature	Hydro Test Pr.
14 Kg/cm ²	220°C	21 Kg/cm ²

BILL OF MATERIAL

Sr. No	Part	Material
01	Body	Cast Iron
02	Cover	Cast Iron
03	Cover Gasket	Asbestos Free Fibre Jointing
04	Valve Seat	SS420
05	Valve	SS304
06	Lever	SS304
07	Float	SS304
08	Air Vent Assembly / SLR	SS304
09	Hex Bolt	High Tensile
10	Gasket Air Vent	Copper
11	Gasket Valve Seat	Copper

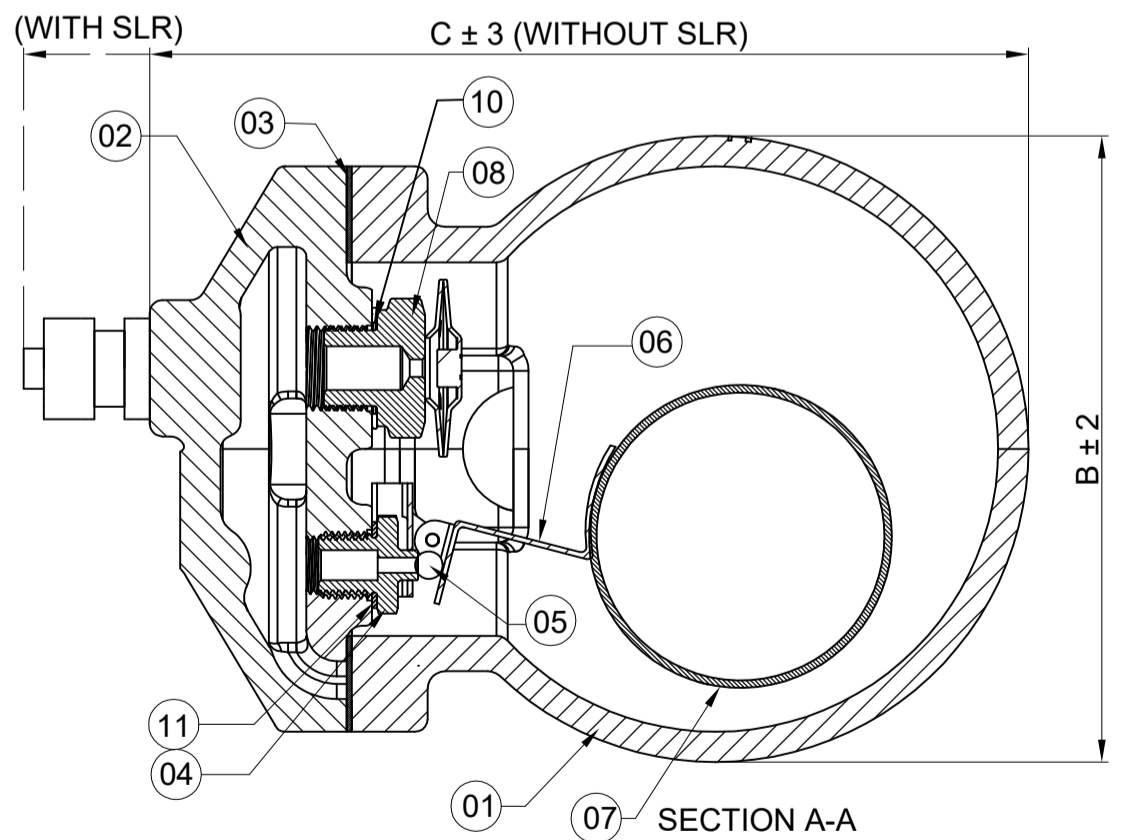
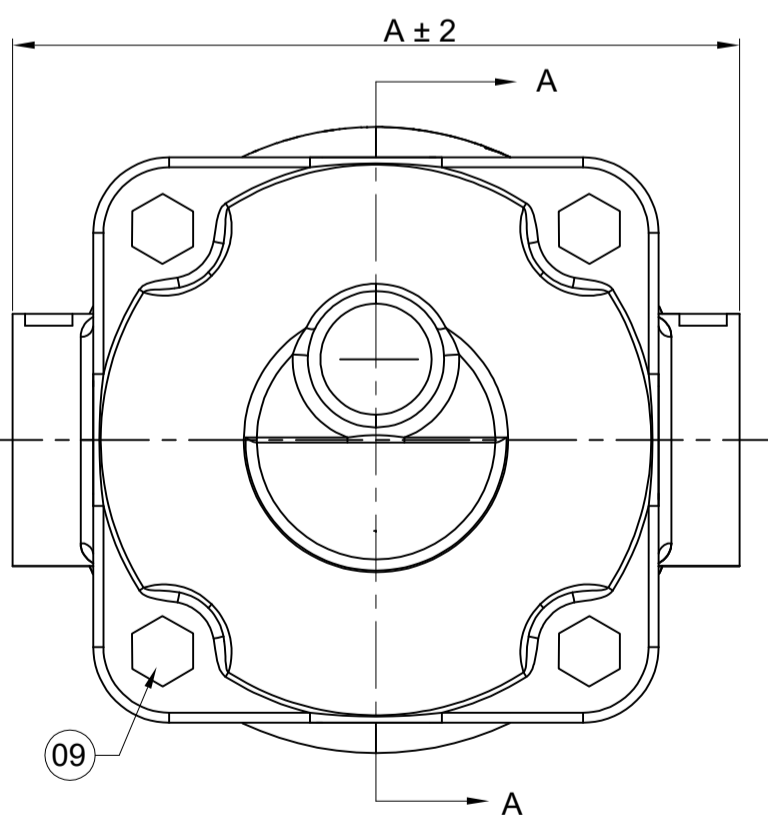
INSTALLATION :

Float Trap can be installed in horizontal as well as in vertical position subjected to the specification provided during the ordering stage. Hence the flow direction must be as per shown on body. Before installing trap, the inlet piping should be carefully blown down to remove any existing pipe debris.

DIMENSIONS(MM)

Dimension	Size		
	15 NB	20 NB	25 NB
A	144	144	144
B	Ø110	Ø110	Ø125
C	Without SLR	145	145
	With SLR	170	170
Approx Weight(KG)	4.5	4.5	5.1

ALL DIMENSIONS ARE IN MM



* NOTE : WE RESERVE THE RIGHT TO CHANGE SPECIFICATIONS WITHOUT PRIOR NOTICE FOR THE DEVELOPMENT AND IMPROVEMENT OF THE PRODUCT.

PAGE.: 02 OF 02

VOLFRAM SYSTEMS INDIA PVT. LTD.

OFFICE ADDRESS : 402, RUTUVIHAR, VARANASI SOCIETY, WARJE, PUNE, 411058
 FACTORY ADDRESS : D II, BLOCK NO. 58&59- 13/14/15, OPP. SPACO CO., SANT
 DYANESHWAR INDUSTRIAL ESTATE, MOHAN NAGAR, MIDC CHINCHWAD, 411019
 Tel.: +91 9309534688 | Email: steam@volfram.in | www.volfram.in



V5 OCT 2023