

# CONDENSATE RECOVERY PUMP (VCRP)

## TECHNICAL INFORMATION SHEET

CARBON STEEL

CLASS / RATING : #150| SIZE : 50 NB TO 100 NB

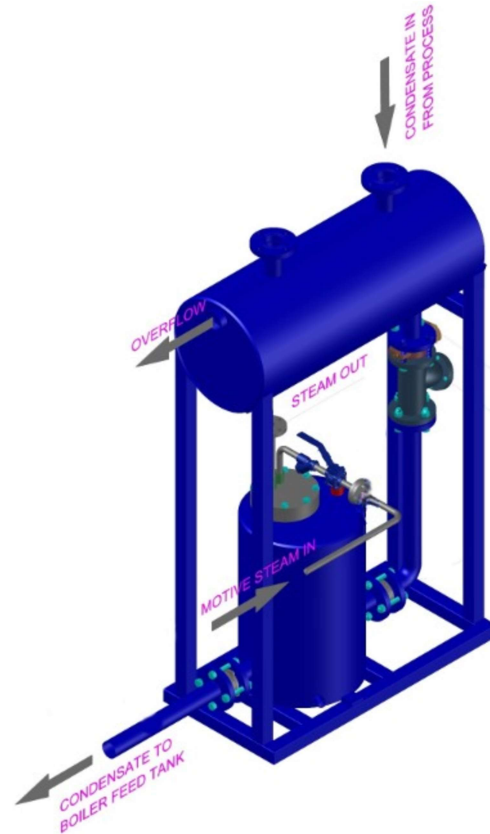


### DESCRIPTION

THE VOLFRAM CONDENSATE RECOVERY PUMP, IS A POSITIVE DISPLACEMENT PUMP UNIT OPERATED BY STEAM TO RECOVER THE CONDENSATE AND ENERGY FROM THE UTILITY CIRCUIT

### BILL OF MATERIAL

Sr.No	ITEM DESCRIPTION	MATERIAL
1	RECEIVER	CARBON STEEL
2	BUTTERFLY VALVE #150	CAST IRON
3	STRAINER #150 / SW	A216 WCB / A105
4	BALL VALVE SW/SCR	A105
5	DCV #150(SANDWITCHED)	STAINLESS STEEL
6	CONDENSATE PUMP	CARBON STEEL
7	PIPING	CARBON STEEL
8	FLANGES & FITTINGS	CARBON STEEL
9	FASTNERS	MS PLATED
10	STRUCTURE	IS 2062



**CONDENSATE RECOVERY PUMP(VCRP)**

### DESIGN PARAMETERS.:

- SIZE.: 50,80,100 NB.
- BODY DESIGN.: 10 bar(g) AT 200 °C
- OPERATING MOTIVE PRESSURE.: 2-7 bar(g)
- PUMP DISCHARGE PER CYCLE.: 30 Ltrs
- MATERIAL OF CONSTRUCTION.: CARBON STEEL

### CAPACITY CHART

Sr. No	MOTIVE PRESSURE (Kg/cm <sup>2</sup> )	BACK PRESSURE (Kg/cm <sup>2</sup> )	VCRP-50 (Kg/hr)	VCRP-80 (Kg/hr)	VCRP-100 (Kg/hr)
01	7.00	1.00	2940	4500	5610
02	7.00	3.00	2820	4260	5430
03	7.00	4.50	2700	4140	5190
04	5.50	1.00	2850	4230	5310
05	5.50	3.00	2670	4110	5280
06	5.50	4.50	2460	3990	5070
07	3.50	1.00	2610	4080	5250
08	3.50	1.50	2550	4020	5190
09	3.50	2.50	2430	3930	5040
10	2.00	0.50	2460	3990	5000
11	2.00	0.80	2430	3930	4900
12	2.00	1.00	2400	3810	4700

PAGE.: 01 OF 02

### VOLFRAM SYSTEMS INDIA PVT. LTD.

OFFICE ADDRESS : 402, RUTUVIHAR, VARANASI SOCIETY, WARJE, PUNE, 411058  
FACTORY ADDRESS : D II, BLOCK NO. 58&59- 13/14/15, OPP. SPACO CO., SANT  
DYANESHWAR INDUSTRIAL ESTATE, MOHAN NAGAR, MIDC CHINCHWAD, 411019  
Tel.: +91 9309534688 | Email: steam@volfram.in | www.volfram.in



V0 February 2023

# CONDENSATE RECOVERY PUMP (VCRP)

## TECHNICAL INFORMATION SHEET

CARBON STEEL

CLASS / RATING : #150| SIZE : 50 NB TO 100 NB



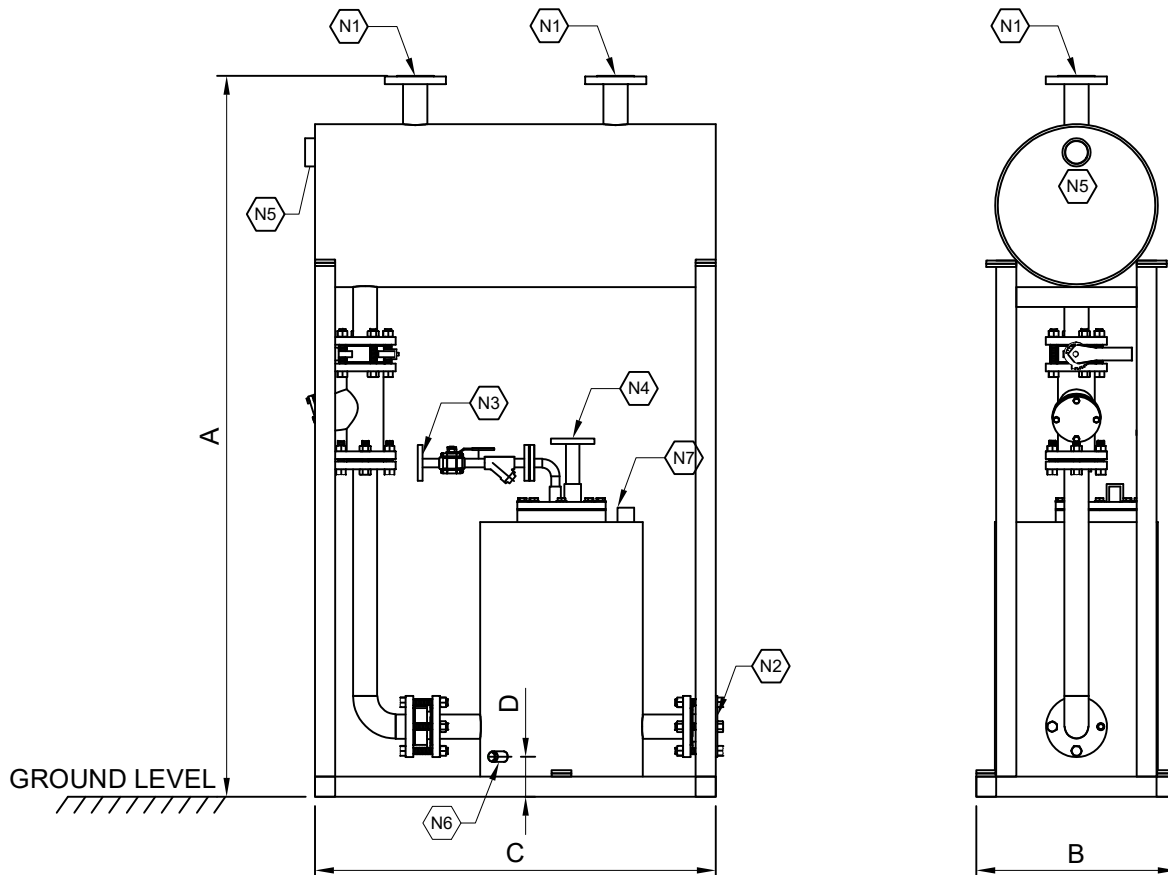
### NOZZLE DESCRIPTION

NOZZLE DETAILS		SIZE		
NOZZLE NO.	DESCRIPTION	VCRP-50	VCRP-80	VCRP-100
N1	CONDENSATE INLET	50NB #150	80NB #150	100NB #150
N2	CONDENSATE OUTLET	50NB #150	80NB #150	100NB #150
N3	MOTIVE STEAM INLET	15NB #150	15NB #150	15NB #150
N4	EXHAUST	25NB #150	25NB #150	25NB #150
N5	SOCKET FOR OVERFLOW	50NB BSP	50NB BSP	50NB BSP
N6	DRAIN PLUG	15NB BSP	15NB BSP	15NB BSP
N7	LEVEL INDICATOR	25NB BSP	25NB BSP	25NB BSP

### DIMENSIONS(MM)

SIZE	A	B	C	D	APPROX WEIGHT(KG)
VCRP 50	1600	500	1000	50	213
VCRP 80	1600	500	1000	50	242
VCRP 100	1600	500	1000	50	286

\* NOTE : ALL DIMENSIONS ARE IN MM(GENERAL TOLERANCE IS  $\pm 10$  MM.)



\* NOTE.:  
 1. THIS SCHEMATICS IS ONLY FOR REFERENCE PURPOSE THE ACTUAL PRODUCT MAY LOOK DIFFERENT.  
 2. WE RESERVE THE RIGHT TO CHANGE SPECIFICATIONS WITHOUT PRIOR NOTICE FOR THE DEVELOPMENT AND IMPROVEMENT OF THE PRODUCT.

### VOLFRAM SYSTEMS INDIA PVT. LTD.

OFFICE ADDRESS : 402, RUTUVIHAR, VARANASI SOCIETY, WARJE, PUNE, 411058  
 FACTORY ADDRESS : D II, BLOCK NO. 58&59- 13/14/15, OPP. SPACO CO., SANT  
 DYANESHWAR INDUSTRIAL ESTATE, MOHAN NAGAR, MIDC CHINCHWAD, 411019  
 Tel.: +91 9309534688 | Email: steam@volfram.in | www.volfram.in

