

# DEAERATOR HEAD (DHS)

## TECHNICAL INFORMATION SHEET

STAINLESS STEEL

CLASS / RATING : #150 | SIZE : 150 NB TO 300 NB



### DESCRIPTION

THE VOLFRAM DEAERATOR HEAD (DHS) IS DESIGNED TO EFFICIENTLY ELIMINATE DISSOLVED GASES AND OXYGEN FROM INCOMING FEEDWATER. BY ENSURING THE REMOVAL OF THESE CORROSIVE ELEMENTS, IT ENHANCES BOILER PERFORMANCE, REDUCES MAINTENANCE COSTS, AND EXTENDS EQUIPMENT LIFESPAN.

### DESIGN PARAMETERS.:

1. MAX. WORKING PRESSURE.: ATM
2. DESIGN PRESSURE.: 1 bar(g)
3. MAX. WORKING TEMPERATURE.: 120 °C

### BILL OF MATERIAL

Sr.No	ITEM DESCRIPTION	MATERIAL
1	BODY	SS 304
2	VACCUM BREAKER	A351 CF8
3	AIR VENT	A351 CF8
5	FLANGES & FITTINGS	SS 304 / CS
6	FASTNERS	MS PLATED
7	PERFORATED SHEET	SS 304
8	GASKET	NON-ASBESTOS

### NOZZEL SIZE CHART

MODEL NOZZLE	DESCRIPTION	DHS-150	DHS-200	DHS-250	DHS-300
N1	CONDENSATE INLET	50 NB	80 NB	100 NB	125 NB
N2	MAKE UP WATER	40 NB	50 NB	80 NB	100 NB
N3	FLASH STEAM INLET	50 NB	80 NB	100 NB	125 NB

### CAPACITY CHART

BOILER CAPACITY (Kg/Hr)	MODEL (NB)
3000	DHS-150
3000-8000	DHS-200
8000-16000	DHS-250
16000-28000	DHS-300

### DIMENSIONS CHART (MM)

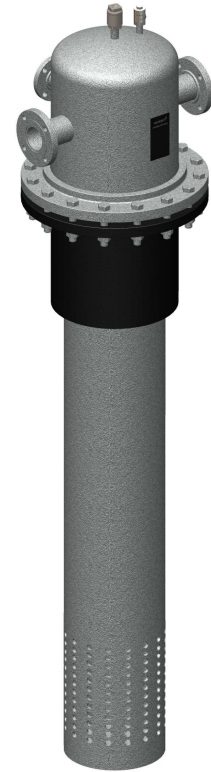
MODEL DIMENSION	DHS-150	DHS-200	DHS-250	DHS-300
A	200	200	200	200
B	300	400	500	600
C	400	500	600	650
D	200	250	300	325

THE LENGTH OF THE IMMERSION PIPE WILL BE PROVIDED AS PER THE HIGHT OF FEED WATER TANK WHICH SHOULD BE CONFIRMED AT THE TIME OF OREDERING.

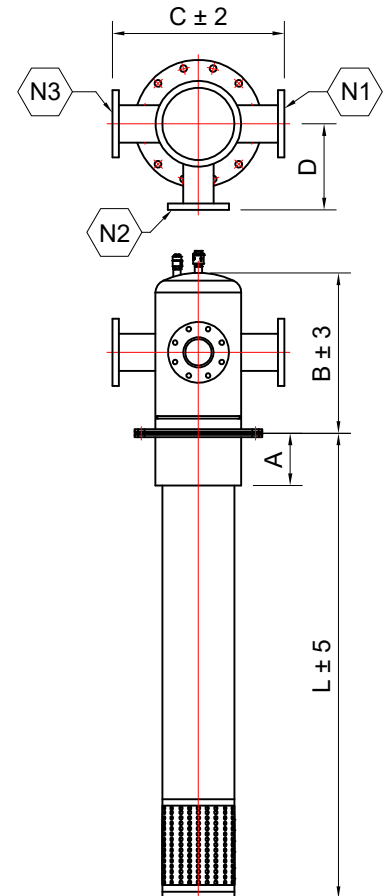
#### \* NOTE.:

1. THIS SCHEMATICS IS ONLY FOR REFERENCE PURPOSE THE ACTUAL PRODUCT MAY LOOK DIFFERENT.
2. WE RESERVE THE RIGHT TO CHANGE SPECIFICATIONS WITHOUT PRIOR NOTICE FOR THE DEVELOPMENT AND IMPROVEMENT OF THE PRODUCT.

PAGE.: 01 OF 01



DEAERATOR HEAD (DHS)



## VOLFRAM SYSTEMS INDIA PVT. LTD.

OFFICE ADDRESS : 402, RUTUVIHAR, VARANASI SOCIETY, WARJE, PUNE, 411058  
 FACTORY ADDRESS : AKURDI INDUSTRIAL ESTATE PLOT NUMBER: 3B+3 PART/32/A  
 & BLOCK :D-1, MIDC CHINCHWAD, PUNE 411019  
 Tel.: +91 9309534688 | Email: steam@volfram.in | www.volfram.in

V1 APR 2024