

# GATE VALVE (GTV-10)

## TECHNICAL INFORMATION SHEET

FORGED CARBON STEEL (ASTM A105)  
CLASS / RATING : #800 | SIZE : 15 NB TO 50 NB



### DESCRIPTION

VOLFRAM GATE VALVE(GTV) ARE AVAILABLE IN CARBON STEEL ASTM A105. THESE GATE VALVES HAVE VARIETY OF APPLICATIONS FOR PROCESS INDUSTRY SUCH AS ON, OFF OR REGULATE THE FLOW OF MEDIA. VOLFRAM GATE VALVES ARE PROVIDED WITH MOST MODERN DESIGN AND CONSTRUCTION, IN ACCORDANCE WITH THE LATEST REQUIREMENT OF ASME / IBR STANDARDS.

### SIZES & CLASS / RATINGS

- AVAILABLE SIZES : 15 NB, 20 NB, 25 NB, 40 NB, 50NB.
- AVAILABLE CLASS : #800 (ASME B 16.11)
- END CONNECTION : SCR BSP/NPT, SOCKET WELD

CERTIFICATION : THESE GATE VALVE ARE AVAILABLE WITH IBR CERTIFICATION (INDIAN BOILER REGULATIONS).

### FEATURES

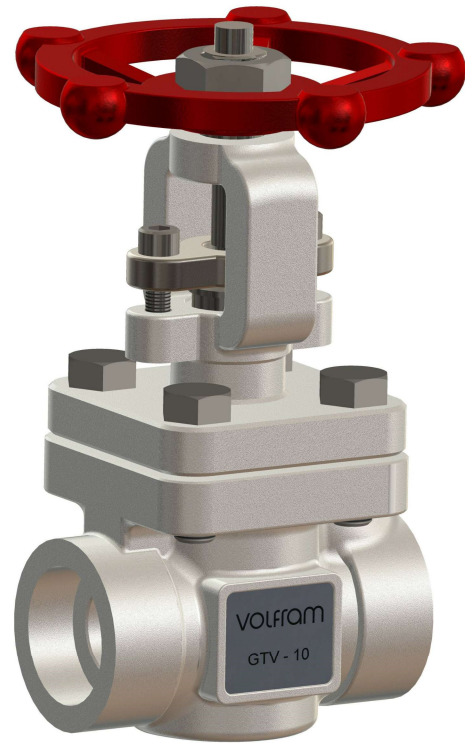
- AVAILABLE WITH REMOVABLE PLUG.
- AVAILABLE WITH TIGHT SEALING.
- ON REQUEST GATE VALVE WILL BE PROVIDED WITH HALF STELLITE AND FULL STELLITE.
- MINIMUM EROSION AND RESISTANCE TO FLOW.
- ON REQUEST GATE VALVE WILL BE PROVIDED IN SS304, SS316, SS316L.
- ON REQUEST RADIOGRAPHY TEST WILL BE PROVIDED.

### GENERAL APPLICATION

- STEAM
- WATER
- OIL / THERMIC FLUID

### OPERATING CONDITIONS

PARAMETERS	SOCKET WELDED #800	SCR BSP #800	SCR NPT #800
MAXIMUM OPERATING PRESSURE	138 Kg/cm2 @ 38°C	12.25 Kg/cm2 @ 250°C	31.5 Kg/cm2 @ 250°C
MAXIMUM OPERATING TEMPERATURE	425°C @ 78.2 Kg/cm2	250°C @ 12.25 Kg/cm2	250°C @ 31.5 Kg/cm2
HYDRO TEST PRESSURE (AS PER IBR)	207 Kg/cm2 @ 30°C	18 Kg/cm2 @ 30°C	47.25 Kg/cm2 @ 30°C



**GATE VALVE (GTV-10)**

### BILL OF MATERIAL

SR. NO.	PARTS	MATERIALS
01	BODY	ASTM A105
02	BONNET	ASTM A105
03	GLAND FOLLOWER	CARBON STEEL
04	PLUG AND SPINDLE	STAINLESS STEEL
05	HANDWHEEL	CAST IRON
06	SEAT	STAINLESS STEEL
07	BODY GASKET	GRAPHITE WITH TANGED SS

### INSTALLATION :

GATE VALVE CAN BE INSTALLED IN HORIZONTAL AS WELL AS IN VERTICLE POSITION. HENCE THE ARROW ON THE BODY MUST POINT IN THE FLOW DIRECTION. BEFORE INSTALLING GATE VALVE, THE INLET PIPING SHOULD BE CAREFULLY BLOWN DOWNED TO REMOVE ANY EXISTING PIPE DEBRIS.

\* NOTE.: WE RESERVE THE RIGHT TO CHANGE SPECIFICATIONS WITHOUT PRIOR NOTICE FOR THE DEVELOPMENT AND IMPROVEMENT OF THE PRODUCT. SHEET 1 OF 2

## VOLFRAM SYSTEMS INDIA PVT. LTD.

OFFICE ADDRESS : 402, RUTUVIHAR, VARANASI SOCIETY, WARJE, PUNE, 411058  
FACTORY ADDRESS : D II, BLOCK NO. 58&59- 13/14/15, OPP. SPACO CO., SANT DYANESHWAR INDUSTRIAL ESTATE, MOHAN NAGAR, MIDC CHINCHWAD, 411019  
Tel.: +91 9309534688 | Email: steam@volfram.in | www.volfram.in

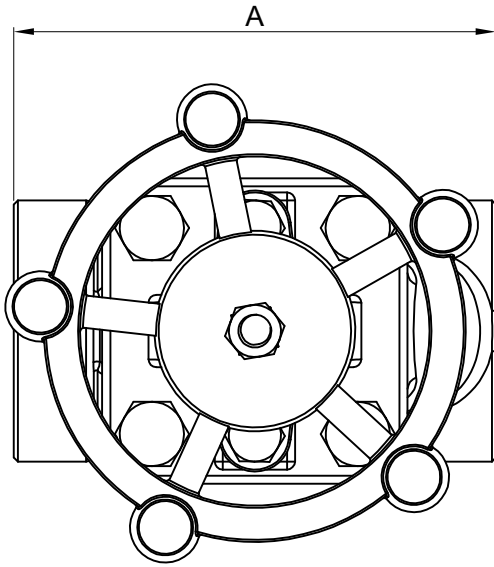


VO NOV 2023

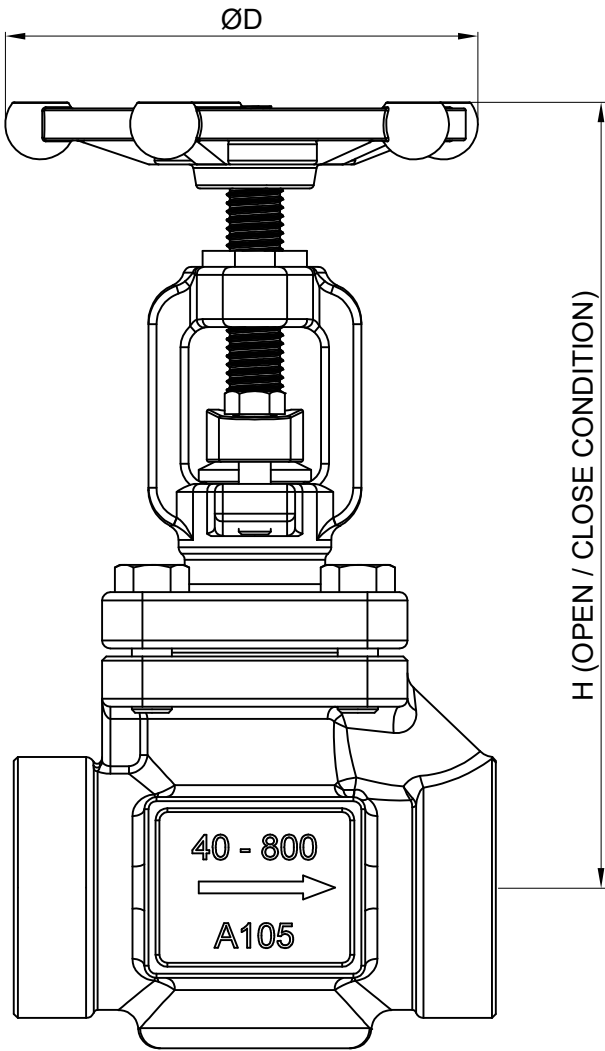
# GATE VALVE (GTV-10)

## TECHNICAL INFORMATION SHEET

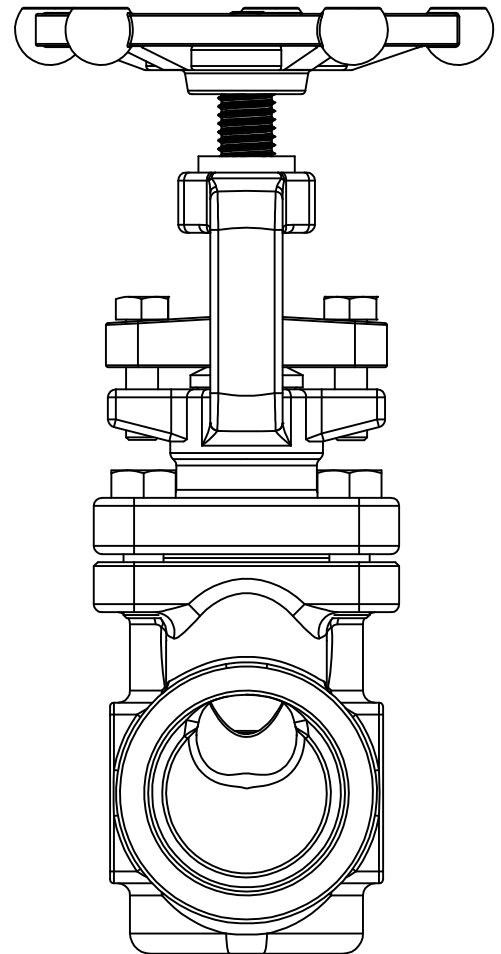
FORGED CARBON STEEL (ASTM A105)  
 CLASS / RATING : #800 | SIZE : 15 NB TO 50 NB



		DIMENSIONS(MM)				
SIZE (NB)		15	20	25	40	50
CLASS #800	A	75	75	90	120	160
	H -OPEN	150	150	168	220	260
	H -CLOSE	134	135	146	190	220
	ØD	80	80	96	112	150



\* NOTE : ALL DIMENSIONS ARE IN MM(GENERAL TOLERANCE IS ± 10 MM.)



- \* NOTE: :
1. THIS SCHEMATICS IS ONLY FOR REFERENCE PURPOSE THE ACTUAL PRODUCT MAY LOOK DIFFERENT.
  2. WE RESERVE THE RIGHT TO CHANGE SPECIFICATIONS WITHOUT PRIOR NOTICE FOR THE DEVELOPMENT AND IMPROVEMENT OF THE PRODUCT.