

# GLOBE VALVE (GLV-10)

## TECHNICAL INFORMATION SHEET

FORGED CARBON STEEL (ASTM A105)  
CLASS / RATING : #800 | SIZE : 15 NB TO 50 NB



### DESCRIPTION

Volfram Globe Valve (GLV) are available in carbon steel ASTM A105. These Globe Valve have variety of application for process industry such as ON, OFF or Regulate the flow of media. Volfram Globe Valve are provided with most modern design and construction, in accordance with the latest requirement of ASME / IBR standards.

### SIZES & CLASS / RATINGS

- Available Sizes : 15 NB, 20 NB, 25 NB, 40 NB, 50NB.
- Available Class : #800 (ASME B 16.11)
- End Connection : SCR BSP/NPT, Socket Weld

CERTIFICATION : These globe valve are available with IBR certification (Indian Boiler Regulations).

### FEATURES

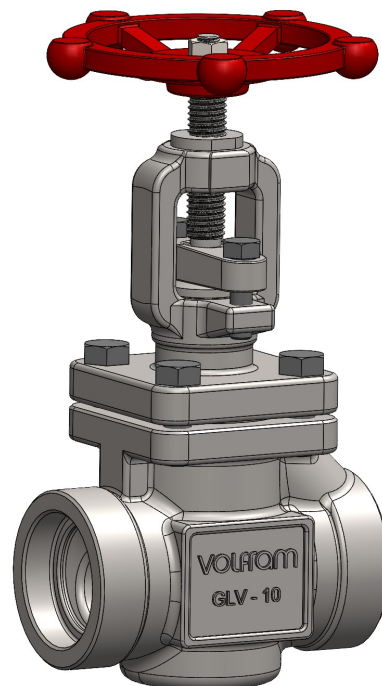
- Available with removable Plug.
- Available with tight sealing.
- On request globe valve will be provided with half stellite and full stellite trim.
- Minimum erosion and resistance to flow.
- On request globe valve will be provided in SS304, SS316, SS316L.
- On request Radiography test will be provided

### General Application

- Steam
- Water
- Oil / Thermic Fluid

### OPERATING CONDITIONS

Parameters	Socket Welded #800	SCR BSP #800	SCR NPT #800
Maximum Operating Pressure	138 Kg/cm <sup>2</sup> @ 38°C	12.25 Kg/cm <sup>2</sup> @ 250°C	31.5 Kg/cm <sup>2</sup> @ 250°C
Maximum Operating Temperature	425°C @ 78.2 Kg/cm <sup>2</sup>	250°C @ 12.25 Kg/cm <sup>2</sup>	250°C @ 31.5 Kg/cm <sup>2</sup>
Hydro Test Pressure (As Per IBR)	207 Kg/cm <sup>2</sup> @ 30°C	18 Kg/cm <sup>2</sup> @ 30°C	47.25 Kg/cm <sup>2</sup> @ 30°C



### GLOBE VALVE (GLV-10)

#### BILL OF MATERIAL

Sr. No.	Parts	Materials
01	Body	ASTM A105
02	Bonnet	ASTM A105
03	Gland Follower	Carbon Steel
04	Plug and Spindle	Stainless Steel
05	Handwheel	Cast Iron
06	Seat	Stainless Steel
07	Body Gasket	Graphite With Tanged SS

### INSTALLATION :

Globe Valve can be installed in horizontal as well as in vertical position. Hence the arrow on the body must point in the flow direction. Before installing globe valve, the inlet piping should be carefully blown down to remove any existing pipe debris.

\* NOTE.: WE RESERVE THE RIGHT TO CHANGE SPECIFICATIONS WITHOUT PRIOR NOTICE FOR THE DEVELOPMENT AND IMPROVEMENT OF THE PRODUCT.

SHEET 1 OF 2



### VOLFRAM SYSTEMS INDIA PVT. LTD.

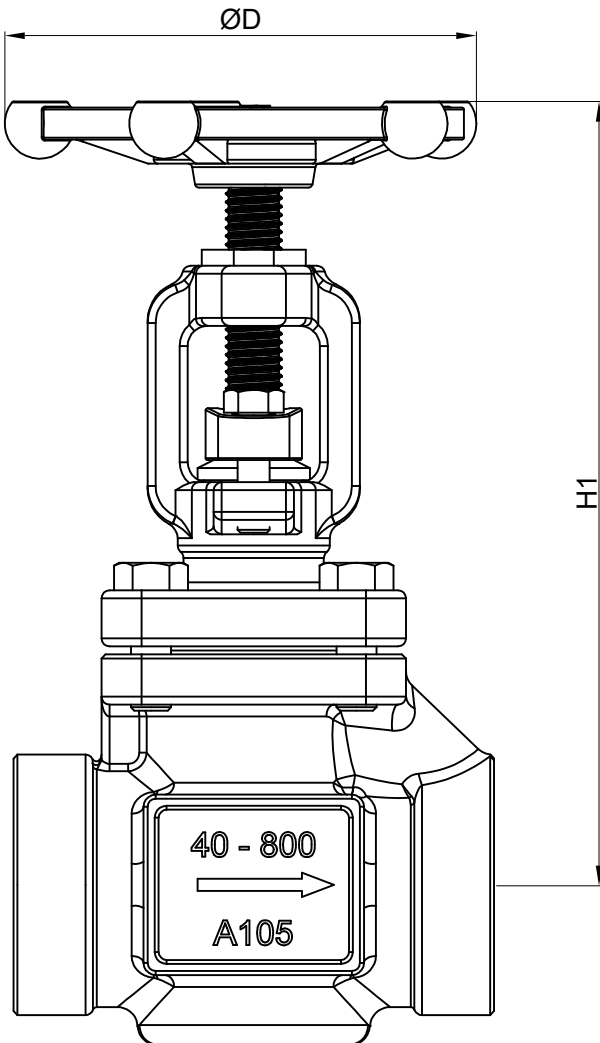
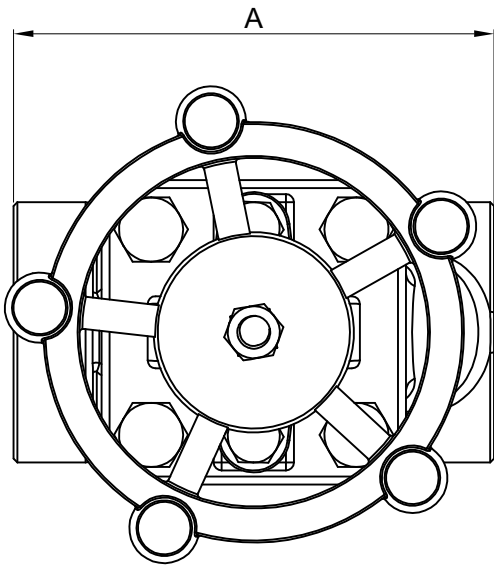
OFFICE ADDRESS : 402, RUTUVIHAR, VARANASI SOCIETY, WARJE, PUNE, 411058  
FACTORY ADDRESS : D II, BLOCK NO. 58&59- 13/14/15, OPP. SPACO CO., SANT  
DYANESHWAR INDUSTRIAL ESTATE, MOHAN NAGAR, MIDC CHINCHWAD, 411019  
Tel.: +91 9309534688 | Email: steam@volfram.in | www.volfram.in

VO AUGUST 2023

# GLOBE VALVE (GLV-10)

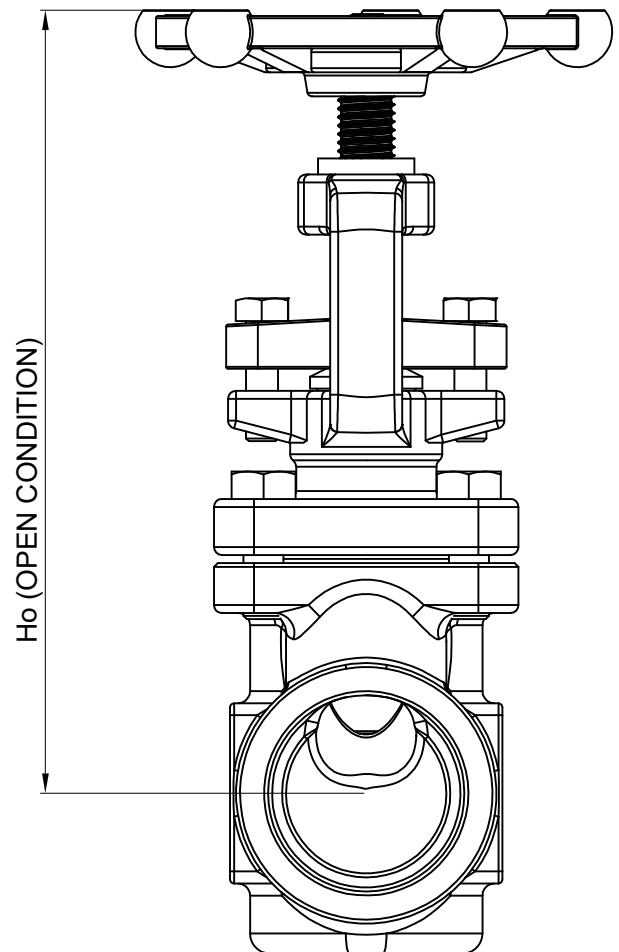
## TECHNICAL INFORMATION SHEET

FORGED CARBON STEEL (ASTM A105)  
 CLASS / RATING : #800 | SIZE : 15 NB TO 50 NB



DIMENSIONS(MM) & WEIGHTS						
Size (NB)	15	20	25	40	50	
Class #800	A	75	75	90	120	148
	H1	140	145	154	172	285
	Ho	160	165	180	242	335
	ØD	95	95	105	120	180
	Weight (KG)	2	2.2	4	7.8	14

\* NOTE : ALL DIMENSIONS ARE IN MM(GENERAL TOLERANCE IS ± 10 MM.)



- \* NOTE:.
1. THIS SCHEMATICS IS ONLY FOR REFERENCE PURPOSE THE ACTUAL PRODUCT MAY LOOK DIFFERENT.
  2. WE RESERVE THE RIGHT TO CHANGE SPECIFICATIONS WITHOUT PRIOR NOTICE FOR THE DEVELOPMENT AND IMPROVEMENT OF THE PRODUCT.

SHEET 2 OF 2



### VOLFRAM SYSTEMS INDIA PVT. LTD.

OFFICE ADDRESS : 402, RUTUVIHAR, VARANASI SOCIETY, WARJE, PUNE, 411058  
 FACTORY ADDRESS : D II, BLOCK NO. 58&59- 13/14/15, OPP. SPACO CO., SANT  
 DYANESHWAR INDUSTRIAL ESTATE, MOHAN NAGAR, MIDC CHINCHWAD, 411019  
 Tel.: +91 9309534688 | Email: steam@volfram.in | www.volfram.in

V0 AUGUST 2023