

# FLASH STEAM SEPARATOR (FSS)

## TECHNICAL INFORMATION SHEET

CARBON STEEL

CLASS / RATING : #150 | SIZE : 150 NB TO 300NB



### DESCRIPTION

THE VOLFRAM FLASH STEAM SEPARATOR (FSS) IS DESIGNED TO EFFICIENTLY SEPARATE FLASH STEAM GENERATED DURING CONDENSATE PRESSURE REDUCTION. IT AIDS IN CONDENSATE RECOVERY, MINIMIZING WATER AND ENERGY WASTE WHILE OPTIMIZING ENERGY USAGE. THIS ROBUST VESSEL IS EASILY INTEGRATED INTO VARIOUS INDUSTRIES, ENHANCING OPERATIONAL EFFICIENCY, REDUCING COSTS, AND CONTRIBUTING TO SUSTAINABILITY GOALS. WITH ITS DURABLE CONSTRUCTION AND RELIABLE PERFORMANCE, THE VOLFRAM FLASH STEAM SEPARATOR (FSS) IS A VALUABLE ADDITION TO ANY UTILITY CIRCUIT.

### DESIGN PARAMETERS.:

1. DESIGN PRESSURE.: 10 bar(g)
2. DESIGN TEMPERATURE.: 200 °C
3. HYDRO TEST PRESSURE.: 15 bar(g)
4. END CONNECTION: FLANGED ENDS (ASME B16.5)

### BILL OF MATERIAL

Sr.No	ITEM DESCRIPTION	MATERIAL
1	BODY	CARBON STEEL
2	PRESSURE GAUGE	SS 316
3	SAFETY VALVE SCR	SS 304
4	PIPING	CARBON STEEL
5	FLANGES & FITTINGS	CARBON STEEL
6	DRAIN PLUG	MS

### NOZZEL SIZE CHART

MODEL \ NOZZLE	FSS-150	FSS-200	FSS-250	FSS-300
N1	50 NB	50 NB	65 NB	80 NB
N2	50 NB	50 NB	50 NB	80 NB
N3	65 NB	80 NB	100 NB	150 NB
N4	15 NB	15 NB	15 NB	15 NB
N5	25 NB	25 NB	25 NB	25 NB
N6	25 NB	25 NB	25 NB	25 NB

### DIMENSIONS CHART (MM)

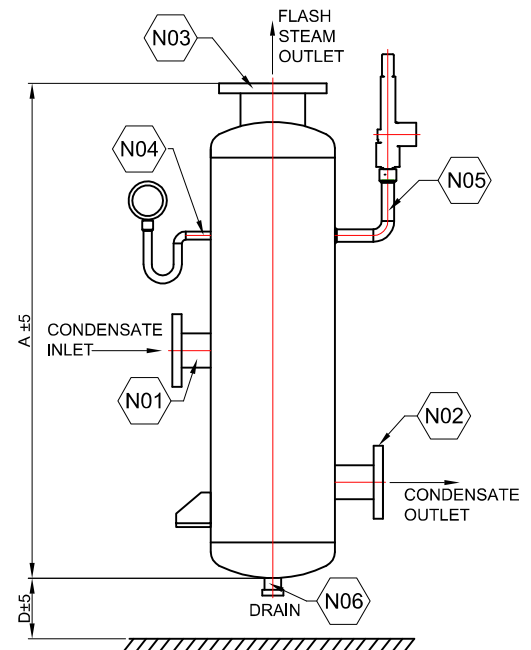
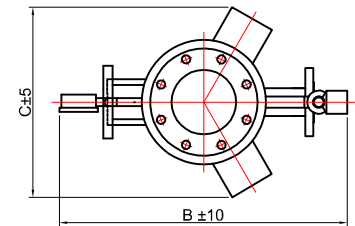
MODEL \ DIMENSION	FSS-150	FSS-200	FSS-250	FSS-300
A	1100	1100	1200	1300
B	600	650	700	760
C	260	335	420	495
D	300	300	300	300

#### \* NOTE.:

1. THIS SCHEMATICS IS ONLY FOR REFERENCE PURPOSE THE ACTUAL PRODUCT MAY LOOK DIFFERENT.
2. WE RESERVE THE RIGHT TO CHANGE SPECIFICATIONS WITHOUT PRIOR NOTICE FOR THE DEVELOPMENT AND IMPROVEMENT OF THE PRODUCT.



**FLASH STEAM SEPARATOR (FSS)**



## VOLFRAM SYSTEMS INDIA PVT. LTD.

OFFICE ADDRESS : 402, RUTUVIHAR, VARANASI SOCIETY, WARJE, PUNE, 411058  
 FACTORY ADDRESS : D II, BLOCK NO. 58&59- 13/14/15, OPP. SPACO CO., SANT  
 DYANESHWAR INDUSTRIAL ESTATE, MOHAN NAGAR, MIDC CHINCHWAD, 411019  
 Tel.: +91 9309534688 | Email: steam@volfram.in | www.volfram.in